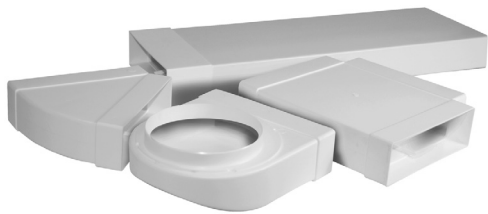


FLATPACK LOW PROFILE DUCT SYSTEM



DESCRIPTION

FlatPack duct is a low profile alternative to round PVC pipe commonly used in ventilation systems. It has a compact design that makes it ideal for applications where space is limited and features a smooth inner surface which minimises pressure loss and therefore improves air flow. The modular, slide-together design of the system makes it simple to install into most applications. There are two sizes of FlatPack ducting available, the 125 series and the 165 series.

Typical Applications

Designed for exhaust and supply air ventilation systems in residential accommodation such as apartments and homes. Suitable for exhausting air from toilets, bathrooms and low pressure kitchen systems.

Features

- Can be cut down to size to fit into virtually any space.
- Large range of fittings ensures duct can be installed into most applications.
- Specially designed flat channel clip makes mounting duct easy.
- A cost effective alternative to sheet metal ducting where air flows allow.
- Components are light weight, corrosion resistant and hygienic.

Construction

Duct is extruded and moulded from self-extinguishing uPVC

Testing

UL181.9-1994, AS1530.3-1999

Fantech FlatPack low profile ducting has been shown to comply with BCA2014 as an alternative solution. For further information please contact your local sales office for a copy of Aurecon Fire Engineering Assessment "Fantech FlatPack System" 11/12/2014.

SUGGESTED SPECIFICATION

The ducting shall be of the FlatPack low profile duct range as supplied by Fantech Pty Ltd and be of the model number shown on the schedule/drawings.

Duct shall be manufactured from self-extinguishing uPVC with a smooth inner surface. The system shall be a modular, slide-together design and come with a specially designed flat channel clip.

The duct system shall be tested to UL181.9-1994, AS1530.3-1999 and comply to BCA2014 as an alternative solution.

	Description	125 Series	165 Series
	Flat rigid duct 2 metre long	FPD125-DUCT-2M 	FPD165-DUCT-2M
	Duct connector	FPD125-CONDD	FPD165-CONDD
	Self seal connector duct to duct	FPD125-CONSSDD	FPD165-CONSSDD
	Self seal connector duct to fittings	FPD125-CONSSDF	FPD165-CONSSDF
	90° Horizontal bend	FPD125-HBEND-90	FPD165-HBEND-90
	45° Horizontal bend	FPD125-HBEND-45	FPD165-HBEND-45
	90° Vertical bend	FPD125-VBEND-90	FPD165-VBEND-90
	45° Vertical bend	FPD125-VBEND-45	FPD165-VBEND-45
	Equal T piece	FPD125-TPIECE	FPD165-TPIECE
	Flexible bend	FPD125-FLEXBEND	FPD165-FLEXBEND
	Round/rectangular rotating transition 90° bend - Ø150mm	FPD125-TR150-90	-
	Round/rectangular transition 90° bend - Ø150mm	-	FPD165-TR150-90
	Round/rectangular transition 90° bend - Ø125mm	-	FPD165-TR125-90
	Round/rectangular transition - Ø125mm	FPD125-TR125	-
	Round/rectangular transition - Ø150mm	-	FPD165-TR150
	Wall plate	FPD125-WPR	-
	Duct Clip - plastic	FPD125-CLIP	-
	Duct Clip - metal	FPD125-CLIPMETAL	FPD165-CLIPMETAL

Circular reducer/expanders

	Circular reducer/ expander Ø125mm to Ø100mm	FPD-RED125/100
	Circular reducer/ expander Ø150mm to Ø100mm	FPD-RED150/100
	Circular reducer/ expander Ø150mm to Ø125mm	FPD-RED150/125
	Circular reducer/ expander Ø200mm to Ø150mm	FPD-RED200/150

PERFORMANCE DATA

125 Series (204mm X 60mm)

Component	Description	Air flow L/s @ Pressure Loss, Pa			
		30L/s	60L/s	90L/s	120L/s
FPD125-DUCT-2M	Flat rigid duct, 204mm x 60mm, 2m long	3.9	14.4	30.8	52.7
FPD125-CONDD	Duct connector	0.3	1.1	2.0	3.5
FPD125-CONSSDD	Self seal connector duct to duct	1.2	3.2	6.5	10.4
FPD125-CONSSDF	Self seal connector duct to fittings	0.9	3.4	7.5	14.4
FPD125-HBEND-90	90° Horizontal bend	7.5	30.6	69.9	125.6
FPD125-HBEND-45	45° Horizontal bend	2.7	13.2	35.0	71.6
FPD125-VBEND-90	90° Vertical bend	4.5	17.9	40.2	71.2
FPD125-VBEND-45	45° Vertical bend	2.7	13.4	30.1	53.4
FPD125-TPIECE	Equal T piece	-	-	-	-
FPD125-FLEXBEND	Flexible bend	-	-	-	-
FPD125-TR150-90	Round/rectangular rotating transition 90° bend - Ø150mm	5.9	23.5	52.9	94.1
FPD125-TR125	Round/rectangular transition - Ø125mm	3.8	15.4	34.8	61.9

- Denotes no pressure loss data available

165 Series (220mm X 90mm)

Component	Description	Air flow L/s @ Pressure Loss, Pa					
		30L/s	60L/s	90L/s	120L/s	150L/s	180L/s
FPD165-DUCT-2M	Flat rigid duct, 220mm x 90mm, 2m long	0.7	2.3	4.7	7.8	11.7	16.3
FPD165-CONDD	Duct connector	0.0	0.0	0.1	0.2	0.4	0.7
FPD165-CONSSDD	Self seal connector duct to duct	0.1	0.1	0.2	0.4	0.6	0.9
FPD165-CONSSDF	Self seal connector duct to fittings	0.1	0.3	0.5	0.8	1.1	1.5
FPD165-HBEND-90	90° Horizontal bend	1.8	7.3	16.5	29.5	46.0	66.6
FPD165-HBEND-45	45° Horizontal bend	0.7	2.4	5.2	9.0	13.8	19.6
FPD165-VBEND-90	90° Vertical bend	1.7	6.2	13.7	24.1	37.3	53.3
FPD165-VBEND-45	45° Vertical bend	0.5	1.9	3.9	6.5	9.8	13.7
FPD165-TPIECE	Equal T piece	-	-	-	-	-	-
FPD165-FLEXBEND	Flexible bend	-	-	-	-	-	-
FPD165-TR150-90	Round/rectangular transition 90° bend - Ø150mm	2.8	10.6	23.6	41.8	65.4	94.1
FPD165-TR125-90	Round/rectangular transition 90° bend - Ø125mm	5.9	23.0	50.8	90.2	140.6	202.1
FPD165-TR150	Round/rectangular transition - Ø150mm	0.6	1.7	3.3	5.4	7.9	10.8

- Denotes no pressure loss data available

Circular reducer/expanders

Component	Description	Air flow L/s @ Pressure Loss, Pa			
		30L/s	60L/s	90L/s	120L/s
FPD-RED125/100	Ø125mm to Ø100mm	5.9	24.0	46.0	73.0
FPD-RED150/100	Ø150mm to Ø100mm	7.7	30.8	64.0	103.0
FPD-RED150/125	Ø150mm to Ø125mm	2.2	8.8	28.0	48.0
FPD-RED200/150	Ø200mm to Ø150mm	5.1	20.5	42.7	68.7

Accessories

Components	Description	Air flow L/s @ Pressure Loss, Pa (Exhaust only)				
		30L/s	60L/s	90L/s	120L/s	150L/s
PFL150	Plastic Fixed Louvre - Ø150 spigot complete with fly wire	10	34	80	145	230
PGL150	Plastic Gravity Louvre - Ø150 spigot	7	19	42	77	125



Scan the QR Code to view more information online.

